



MEET

 **Doorkeeper**

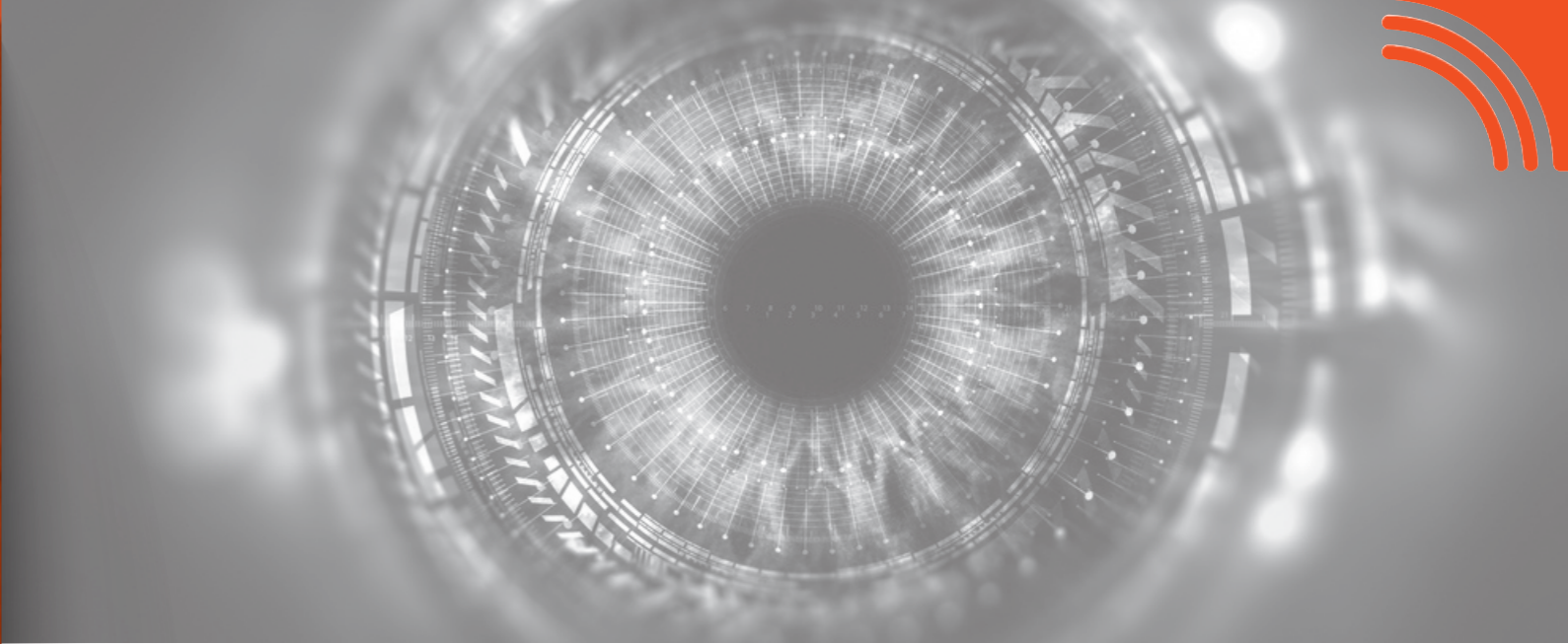
Australia's leading
Biometric Identity Management Solutions

Protect people. Manage assets. Control access.



MEET BIODE •

Our vision is to be the leading innovator of biometric identity management solutions to protect people and physical assets.



CONTENTS

PAGE 03

Meet Biode

PAGE 04

Meet Doorkeeper

PAGE 10

Under the hood

PAGE 15

Meet the hardware

PAGE 18

Meet our friends

PAGE 19

Meet our customers

OUR STORY •

At Biode, our team is passionate about biometric identity management solutions - we live and breathe this stuff. We are driven by a deep desire to lead the biometric software industry in our quest to protect and manage people and physical assets.

There is no doubt we are a bit nerdy, and our marketing department often says, "you're all insane!!"

...but we consider it a compliment and happily spend countless hours exploring endless possibilities.

Each day we take another step forward in the creation of industry-defining innovations that set new benchmarks for speed, accuracy, and flexibility.

We develop state-of-the-art software for Government organisations and commercial enterprises that seamlessly integrate with world-leading biometric identification technology. Yet, we understand our future success requires an unwavering commitment to excellence so that our clients are free to manage their facility with an unparalleled degree of confidence and control.

Although our team have come a long way over the past two decades, we are excited to say that we are just getting started!

Doorkeeper

The benchmark for biometric identity management solutions in correctional centres.

Doorkeeper places biometric technology at the heart of identity management in leading correctional facilities.

Our cutting-edge people-management solution captures an individual's unique biometric identity to enable unparalleled control in highly secure environments.

The Biode team is continually working to innovate Doorkeeper – ensuring delivery of superior functionality and reliability, while never compromising system security or the safety of staff, inmates, and visitors.

At its core, Doorkeeper uses advanced biometric identification to enable correctional centres to more effectively manage:

- PEOPLE: their unique attributes, rights, and privileges.
- ASSETS: location and movement of officer accoutrements and prisoner property.
- ACCESS: who goes where, and when.

Doorkeeper is trusted by leading private and public correctional centres across Australia and New Zealand.



PEOPLE MANAGEMENT

Biometric technology for better people-management.

THE DOORKEEPER SYSTEM

Biometric technology leads to better prison management.



Doorkeeper provides unparalleled people-management capability within leading correctional facilities.

Our cutting-edge solution matches an individual's biometric attributes with an encrypted user profile to accurately and dependably:

- control access rights and privileges instantaneously;
- capture time and attendance information; and
- track people movement in/out and within the facility.

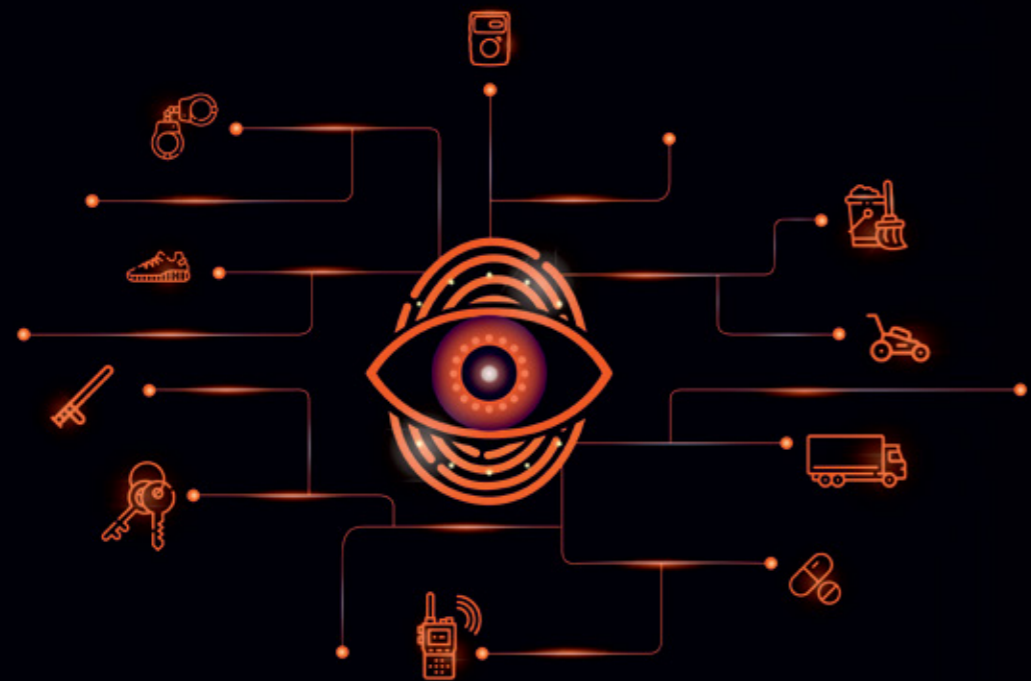
Doorkeeper seamlessly integrates with existing people-management applications by sharing valuable data to optimise your overall system.

One of Doorkeeper's key functions is to reinforce internal rules and policies by assigning individuals with a specific user-profile based on unique attributes. These custom fields are then grouped with other personnel and used to simply manage the people in your facility.

Vital user data is continuously gathered, providing valuable real-time intel which can be analysed for deeper insights.

Doorkeeper reinforces your people-management system.

- Rostering and payroll
- Permission control
- Time and attendance
- Muster reporting
- Intelligence gathering
- Duress and lockdown



ASSET MANAGEMENT

The critical role of asset-management in correctional centres.

Doorkeeper sets the benchmark for asset- management in Australia's leading correctional facilities.

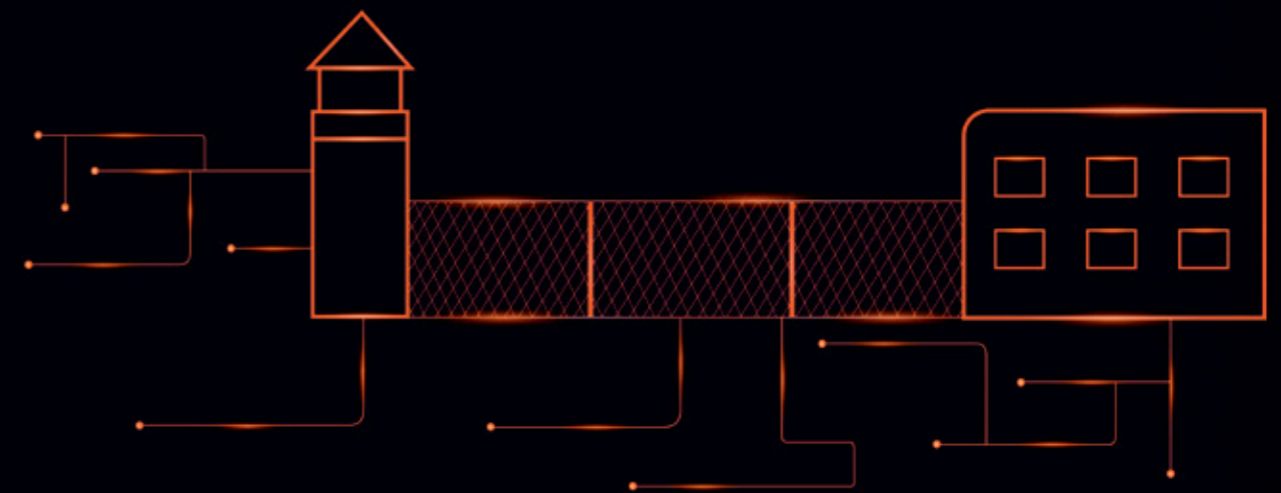
Doorkeeper protects valuable property and equipment with a level of accuracy achieved only through biometric identity management technology.

Designed specifically for the demanding needs of highly secure facilities, Doorkeeper manages the use and tracks the whereabouts of critical assets, such as:

- security accoutrements;
- prisoner property, and
- mobile equipment.

Doorkeeper reinforces your asset-management system.

- RFID tags and scanners
- Prisoner property systems
- CCTV and alarms
- Keys and key safes
- Custom authorisations
- Intelligence gathering



ACCESS MANAGEMENT

Welcome to the new era in access-control.

Dependable and robust access-control is mission-critical to ensure people and physical assets are safe and secure.

Doorkeeper's access-control capabilities were designed for the stringent security requirements of correctional centres.

Doorkeeper introduces a superior level of access-management; integrating biometric identification technology with state-of-the-art software to identify and authenticate people onsite.

Doorkeeper allows operators to manage authorisations and securely control access to specific areas and physical assets.

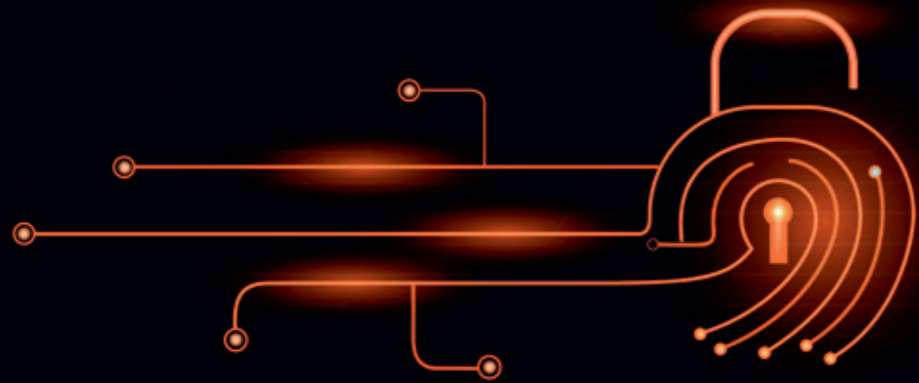
Doorkeeper reinforces your access-management system.

- Mantraps/turnstiles
- Keys and Key safes
- Master control
- CCTV and alarms
- Duress and lockdowns
- Intelligence gathering
- Custom authorisations

NEED TO SOLVE THESE COSTLY PROBLEMS?

How to:

- Capture and verify the identity of people onsite
- Track and control accoutrements and mobile assets
- Manage a user's access and asset authorisations
- Protect valuable property, plant and equipment
- Record precise time and attendance of staff
- Implement a robust muster control system



OUR SOLUTION



WHY CORRECTIONAL CENTRES TRUST DOORKEEPER:

- Secured by biometric identity
- Optimised key management
- Unparalleled customisation
- Unlimited system scalability
- Maximum management control
- Live and interconnected system
- Useful intelligence gathering
- Seamless system integration



**Protect People.
Manage Assets.
Control Access.**

GET BIODE.

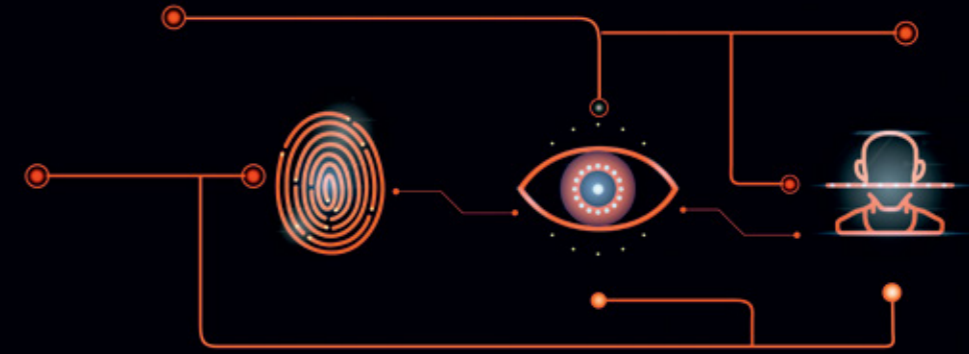
Schedule a consultation with one of our biometric experts today.

Book Biode at

www.biode.com.au/doorkeeper/contact-us/

UNDER THE HOOD

Doorkeeper is the trusted biometric identity management solution. Here's why...



INTEGRABILITY

At Biode, we strive for excellence. So, when it comes to biometric devices, Doorkeeper is limited only by our strategic decision to partner with the world's leading technology. Doorkeeper is future-proof, brand-agnostic and extremely flexible; which means our clients are not restricted to one hardware provider, and future technological advances can be quickly adopted.

Biometric hardware and matching engine integrations include:

- IDEMIA (Morpho) fingerprint and facial identification
- IRIS ID iris identification

Leading 3rd-party system integrations include:

- Honeywell EBI
- SAAB OneView
- Inner Range Integriti
- Gallagher Access Control Systems

Peripheral hardware integrations include:

- Gunnebo secure mantraps, speedstiles and turnstiles
- Morse KeyWatcher electronic key cabinets
- PG Systems/White conveyor property bag system
- Zebra RFID and barcode scanners and printers
- Barix digital I/O's
- Weigand access control systems using custom HLI's
- Witek driver's licence scanning with OCR

CONNECTIVITY

In corrections, every system must be robust and dependable. Doorkeeper is purposefully designed to run within an isolated corrections environment, regardless of the server operating environment - including virtualised machines.

Here are a few of Doorkeeper's most important features:

Server-based architecture:

- Server-side, one-to-many (1:n) biometric matching engines fully integrated within Doorkeeper. No on-device matching or 3rd-party matching servers required.
- Server performance and replication monitoring.
- Built on MS SQL server technology.

High-availability:

- Doorkeeper runs with dual servers to provide a high-availability environment and instant redundancy.
- Constant polling (<1 second) with configurable fail-over to allow for local network congestion.
- Built-in redundancy enables offline server maintenance without disrupting services.

Doorkeeper's proprietary Central Replication Engine:

- Allows every corrections site within the State's network to be interconnected.
- Instant sharing of critical user intel, including real-time people movement, key access, visit sessions, e.g. who's visiting who, where and when.
- High speed Doorkeeper-to-Doorkeeper data replication ensures changes to a user profile are reflected instantly throughout the entire centre.
- Push-based data replication ensures updates are reflected state-wide within seconds.

EXPANDABILITY

We live in a world of unlimited possibility, so it makes sense that Doorkeeper's capacity to expand and meet your changing needs is also unlimited.

- NO theoretical limit to number of enrolled people
- NO theoretical limit to actively managed users
- NO theoretical limit to number of interconnected devices
- NO limit to 'mix and match' biometric devices

DEPENDABILITY

As a boutique service provider, we offer bespoke biometric identity management solutions that meet state regulatory and local operational requirements. To provide 24/7 technical support and system maintenance, Biode operates:

- An online Helpdesk
- Telephone technical support
- Emergency response SLA's
- An extensive network of accredited Doorkeeper service technicians



Authenticate

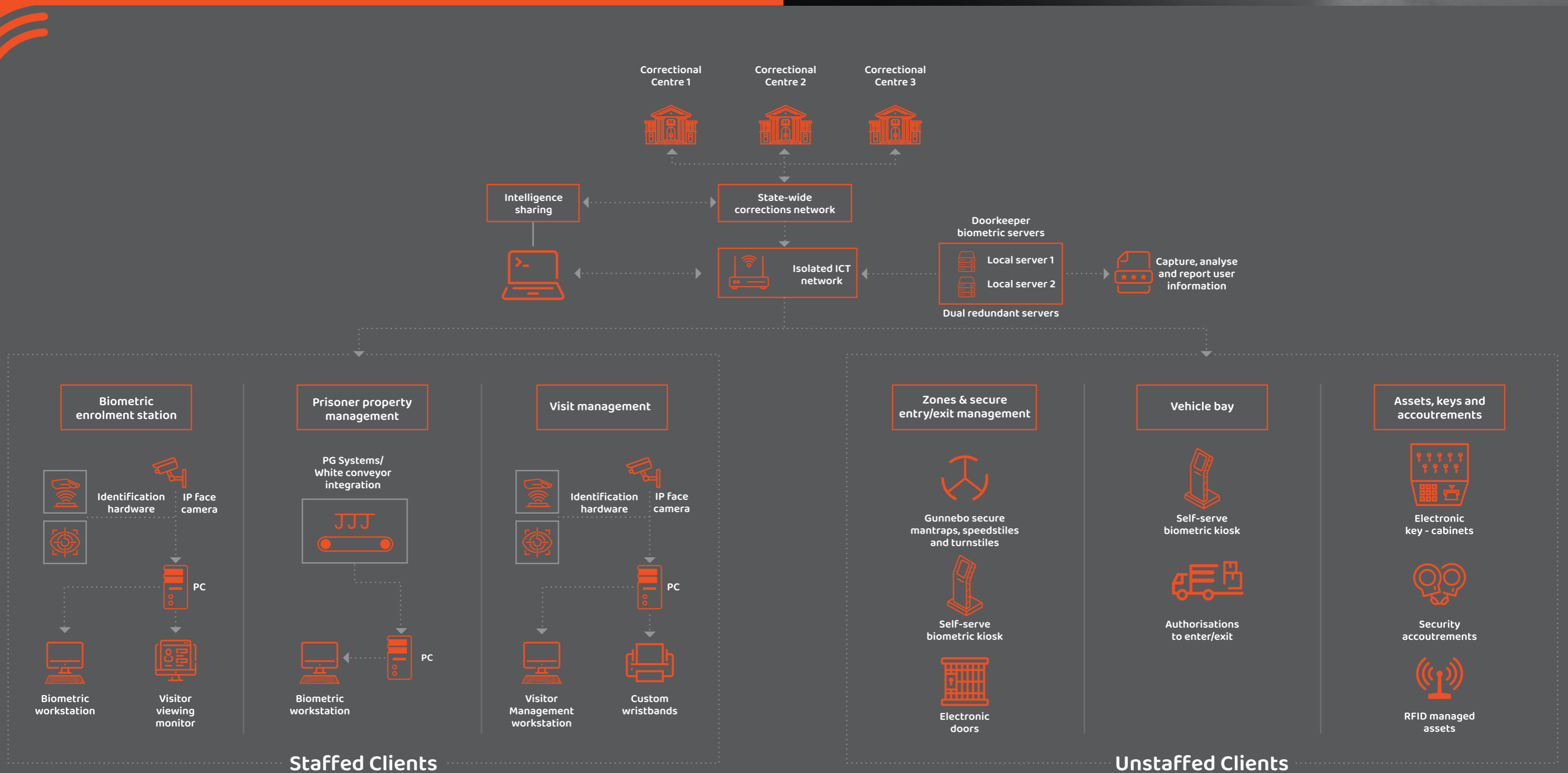


Authorise



Access

Our cutting-edge system seamlessly captures an individual's unique biometric identity to enable unparalleled control within a facility and across a network of sites.



SOFTWARE FEATURES

Doorkeeper is Biode's flagship biometric identity management software solution that enables the accurate and reliable management of people within correctional centres. Doorkeeper has evolved over 20 years and draws upon Biode's deep understanding of the corrections industry. Doorkeeper sets the standard for accuracy, speed and dependability, and boasts an enviable set of features. Let's take a look under the hood.

Doorkeeper Biometric Identification Server

- ✓ Purposefully designed to run within an isolated corrections network
- ✓ Built on MS SQL database
- ✓ Flexible and custom-designed integration solutions
- ✓ Operates in both physical and virtual server environments
- ✓ High availability dual-server configuration
- ✓ State-wide data replication filters
- ✓ Server performance management and replication monitoring
- ✓ Purpose-built self-service kiosks with robust design and Intel hardware
- ✓ Configurable dual-monitor display options
- ✓ Server-side, one-to-many (1:n) biometric matching
- ✓ NO theoretical limit to number of enrolled or actively managed people
- ✓ NO theoretical limit to number of interconnected devices
- ✓ Doorkeeper Central Replication Engine allows instantaneous State-wide data replication

Integrations

- ✓ NO limit to 'mix and match' options for biometric devices used
- ✓ IDEMIA (Morpho) fingerprint identification matching engine
- ✓ IRIS ID iris identification matching engine
- ✓ Honeywell EBI integration - LLI & HLI
- ✓ SAAB OneView integration
- ✓ Inner Range Integrity integration - LLI & HLI
- ✓ Gallagher access control integration - LLI & HLI
- ✓ Supports Weigand access control systems using custom HLI's
- ✓ Gunnebo secure mantraps, speedstiles, and turnstiles
- ✓ PG Systems/White conveyor property bag system
- ✓ Supports direct show webcams and Axis IP cameras for profile pictures
- ✓ Supports Driver's Licence ID scanner with OCR and custom-pass printing
- ✓ Seamless integration with industry-leading hardware manufacturers including IDEMIA MorphoWave Compact, IDEMIA (Morpho) Fingerprint readers and IRIS ID iCam
- ✓ Morse KeyWatcher electronic key cabinets
- ✓ RFID and barcode scanners to manage assets and printers

Doorkeeper Software Features

User management:

- ✓ Import/export tools for remote-user enrolment
- ✓ Find and combine duplicate user profiles
- ✓ Comprehensive tools for user database management
- ✓ Create and enforce custom-attributes on user profile
- ✓ Secondary verification options for low-quality biometrics
- ✓ Central Management of all access authorisations, into & within each centre
- ✓ Create fully customisable person-groups with rules and policies
- ✓ Biometric login for operators

Visit management:

- ✓ Define maximum visitors and visitees for each visitation session
- ✓ Define rules that apply to the visitor group that visit each inmate
- ✓ Define access points that can be used during the visit session
- ✓ Define visit days, duration, start/end times, and recurrence schedules
- ✓ Create re-printable passes and print custom wristbands
- ✓ Highly customisable and comprehensive end-to-end visit management system
- ✓ Track and monitor visitees across all sites in the State live

Zones and secure entry/exit management:

- ✓ Access schedules for time-masked entry control
- ✓ Self-serve and/or staffed biometric kiosks for superior vehicle bay management
- ✓ Full end-to-end access control (zone, movement, entry/exit control)
- ✓ Highly-configurable zones to manage an individual's or group's access to predefined areas with rules and policies, including 'no zone'
- ✓ Zone monitoring to track and control people movement
- ✓ Authorise and control people movement throughout the facility with interlocking flow and anti-passback control

Assets, accoutrement, and key management:

- ✓ Manage access/retrieval of registered prisoner property
- ✓ Comprehensive electronic key safe management
- ✓ Keys can be mixed in any combination per person and person-group
- ✓ Security accoutrements monitoring and access management
- ✓ Track and control whereabouts of keys and accoutrements, including deny exiting the facility until assets are returned.
- ✓ Manage and track whereabouts of RFID assets

Intelligence data gathering and reporting

- ✓ eLog support showing start/stop times
- ✓ Full access logs and key activity logs
- ✓ Report on user profile custom-attributes
- ✓ Fully integrated and customisable reporting
- ✓ Share valuable information with all interconnected corrections sites, such as who is visiting who, where, when, and how often.

MEET THE HARDWARE

In our space, there is zero margin for error. Our biometric identity management system must be holistic and flawless; including both our software and the hardware we integrate. We believe biometric technologies provide the most accurate tools for identification, which is why we are so committed to bringing these solutions to the world.

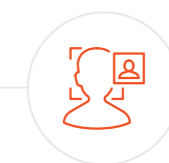
For years, we have focused on implementing cutting-edge fingerprint and iris-scanning devices for optimal identification. The biometric technologies we integrate into Doorkeeper are critically analysed, tested, and selected from the world's leading products.

Essentially, Doorkeeper is brand-agnostic and future-proof when it comes to device integration – if a manufacturer provides an API or SDK, then we can fuse their hardware into our platform.

Offering a future-proof solution, Doorkeeper provides unparalleled flexibility. Our clients are never locked into any particular hardware provider and are free to deploy any combination of biometric devices they require.



Here are the biometric identification technologies we trust:





FINGERPRINT SOLUTIONS

For fingerprint scanning technology, Biode trusts IDEMIA, a global leader in augmented identification.

Fingerprints have been a trusted measurement of identity for centuries, and today, IDEMIA is setting the benchmark for fingerprint identification technology. IDEMIA offer an exceptional range of fingerprint readers that are designed to accommodate the unique security and functionality requirements of each customer.

Broadly, IDEMIA's fingerprint readers include:

- **MorphoWave Compact**
Powerful, touchless multi-fingerprint scanning to identify users with maximum efficiency and security.
- **MorphoSmart Optical (MSO)**
The MSO Series are internationally-renowned fingerprint scanners graded at the forensic level for durability and accuracy.
- **MorphoAccess SIGMA (MA)**
The MA Series includes six highly versatile fingerprint terminals designed for secure access control and precise time and attendance.



www.biode.com.au/doorkeeper/fingerprints



IRIS SOLUTIONS

For iris scanning technology, Biode trusts IRIS ID, a global leader in identity authentication.

The iCAM7 Series features four innovative iris identification machines that are trusted by major companies around the world for access-control and time-and-attendance. IRIS ID's intuitive system enables rapid iris acquisition with excellent image-processing for superior enrolment and recognition. iCAM7 sets industry benchmarks in accuracy, reliability and functionality.

Some key features include:

- **Dual iris** – Fully automatic dual capture for added security and accuracy
- **Contactless** – non-intrusive and non-contact user interface
- **Integration** – compatible with existing and additional third-party systems
- **Remote management** – for convenience and practical usability
- **Smartcard** – an integrated contactless card reader for ultra-security
- **Tilt assist** – automatically tilting scanner to assist unique users



www.biode.com.au/doorkeeper/iris



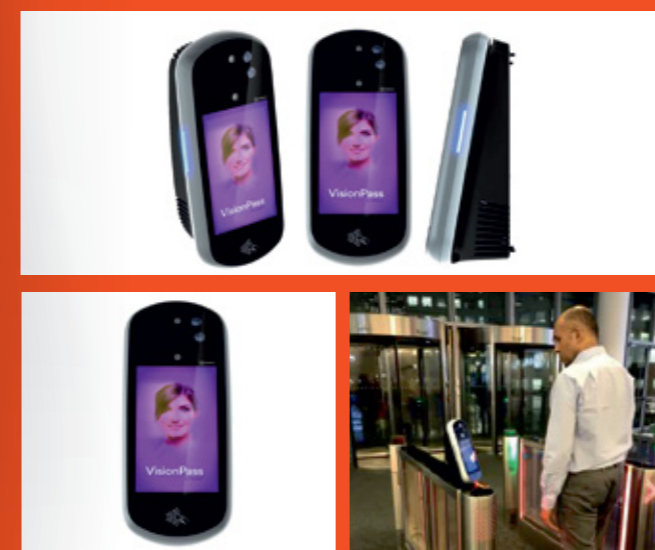
FACIAL RECOGNITION SOLUTIONS

For facial recognition technology, Biode trusts IDEMIA, a global leader in augmented identity.

As facial recognition builds momentum in the mainstream market, IDEMIA's VisionPass is the trusted technology for organisations who require secure access control to protect their premises. The VisionPass offers an advanced solution for egress and ingress in high-traffic areas with technology that sets the benchmark for accuracy, efficiency and ease-of-use. VisionPass was designed to exceed the expectations of the most demanding customers, while also remaining accessible for low and medium security facilities. The advanced technology combines the latest artificial intelligence (AI) and facial recognition algorithms with a state-of-the-art optical set (including 2D, 3D and infra red cameras).

Valued features of the VisionPass include:

- Touchless, near-motion detection
- 1-second identity verification
- 30 throughputs per minute
- 40,000 system users at a time
- Highly resistant to identity fraud
- Any lighting, condition, person



www.biode.com.au/doorkeeper/facial



KIOSK SOLUTIONS

Our biometric kiosks are custom designed for your unique requirements.

Our trusted suppliers of biometric hardware are globally recognised innovators, developing identification tools with superior accuracy, security and reliability. To take the user experience to the next level, Biode offers bespoke kiosk enclosures to enhance usability, functionality and practicality. Our kiosks are advanced set-ups that incorporate biometric identification technology with our innovative software. The kiosks are robust, light-weight, strong, and purpose-built for challenging environments.

Here are some valuable features we incorporate into our kiosks:

- Intel NUC Mini PC
- 10" touchscreens
- In-house support

www.biode.com.au/doorkeeper/custom-kiosks



Reach out to our team of biometric experts for more information and personalised advice about Biode's modern, high-tech biometric identification kiosks.

For more information, visit our website at

www.biode.com.au/doorkeeper/hardware

OUR FRIENDS

Together, we are pioneering biometric innovation to protect people, manage assets and control access.

In our pursuit to be the leading innovator of biometric identity management solutions, Biode has built, and continues to foster, trusted relationships with industry visionaries.

Our team of biometric experts are dedicated to the development of cutting-edge software that can seamlessly integrate with, and compliment other world-class systems provided by our partners.

Here are a few of the noteworthy companies who trust Biode:

Honeywell

Honeywell is a Fortune 100 company, who offers a plethora of innovative solutions designed to make businesses "smarter, faster and safer".

MGA

MGA have been involved in the design and installation of a diverse range of electronic security systems over the last 45 years.



Austral is an Australian-owned company that specialises in the installation, service and support of high-tech security equipment.



IDEMIA (Morpho) is the global leader in augmented identity, specialising in facial recognition and other advanced biometric identification technologies.



SAAB built its international reputation on innovative technologies that keep people and society safe.



AIS has grown to become a leading electronic security and surveillance solution provider, specialising in multi-node security systems.



The ARA Group is a complementary network of building and infrastructure services operating in Australia and New Zealand.



In the pursuit of leading the world in Identity Authentication, IRIS ID is a key developer of iris recognition technology.

DOORKEEPER IS THE TRUSTED SOLUTION FOR:

Government correctional centres

Juvenile detention facilities

Private correctional centres

Where people, assets and access must be safe and secure; Doorkeeper is the leading provider of biometric identity management solutions.

Biode is privileged to collaborate with Australia's leading security integrators to deliver fast, accurate, and flexible biometric identity management solutions.

Our clients include global corporations and over forty correctional facilities throughout Australia and New Zealand. We are proud to say we are the trusted biometric identity management software and hardware provider to:



“

Testimonials

Brilliant! Biode solved our key and accoutrement nightmare. Doorkeeper integrated seamlessly with existing systems to give staff a streamlined and reliable solution to manage keys and assets (1,000's of them!).

Michael Humphris
MGA Electronic Security

”



**Protect People.
Protect Assets. Get Biode.**

The leading innovator of biometric identity management solutions to protect people and physical assets in correctional centres and commercial enterprises.

Schedule a consultation with one of our biometric experts today.

For more information
www.biode.com.au

CORRECTIONAL CENTRES

State-of-the-art solutions for high-security environments



LARGE BUSINESS, GOVT, AND COMMERCIAL

On-premise/hybrid solutions for complex sites



SME AND RETAIL

Cloud-based solutions for dispersed workforces and SME's



For more information

EXPLORE US

www.biode.com.au

CALL US

1300 605 036



LINKEDIN

linkedin.com/company/biode-pty-ltd

VISIT US

- Norwest NSW
- Darra QLD

MAIL US

sales@biode.com.au



FACEBOOK

facebook.com/BiodePtyLtd